

RUBENS

NEEDLE-VALVE PN100

With butt weld ends

The valve are of forged steel construction with locked boxnut

MATERIAL SPECIFICATION:

Body: W.nr 1.0460

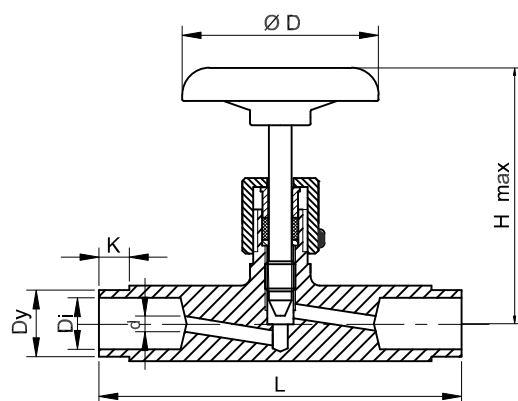
Stem: W.nr 1.4021

Packing: Molded graphite

Handwheel: Aluminium, Red lacquered

RSK. NO	DN
462 02 67	10
462 02 68	15

Pressure	100	40	bar
Temp	20	300	C°



DN	Di	Dy	K	d	L	D	H max	Weight kg	Kv. value
10	12,5	18	10	5	120	65	85	0,52	0,48
15	17	22	10	5	120	65	85	0,49	0,54

- All valves are tested before delivery.
- When welding in, the valve must be fully open
- Weld connection designed for ISO pipes
- Area of use: as a shut-off and control valve for hot water, air, steam, and oil..
- Certificate: Material certificate DIN50049. 2.2 (specified when ordering)
- The products fall under AFS2016:1 Paragraph 8 and do not need to be CE marked.

Rubens
VERKSTAD AB

Njuravägen 11, SE-289 43 Broby
Tel. +46 44 40178
Email. info@rubensverkstad.se
www.rubensverkstad.se