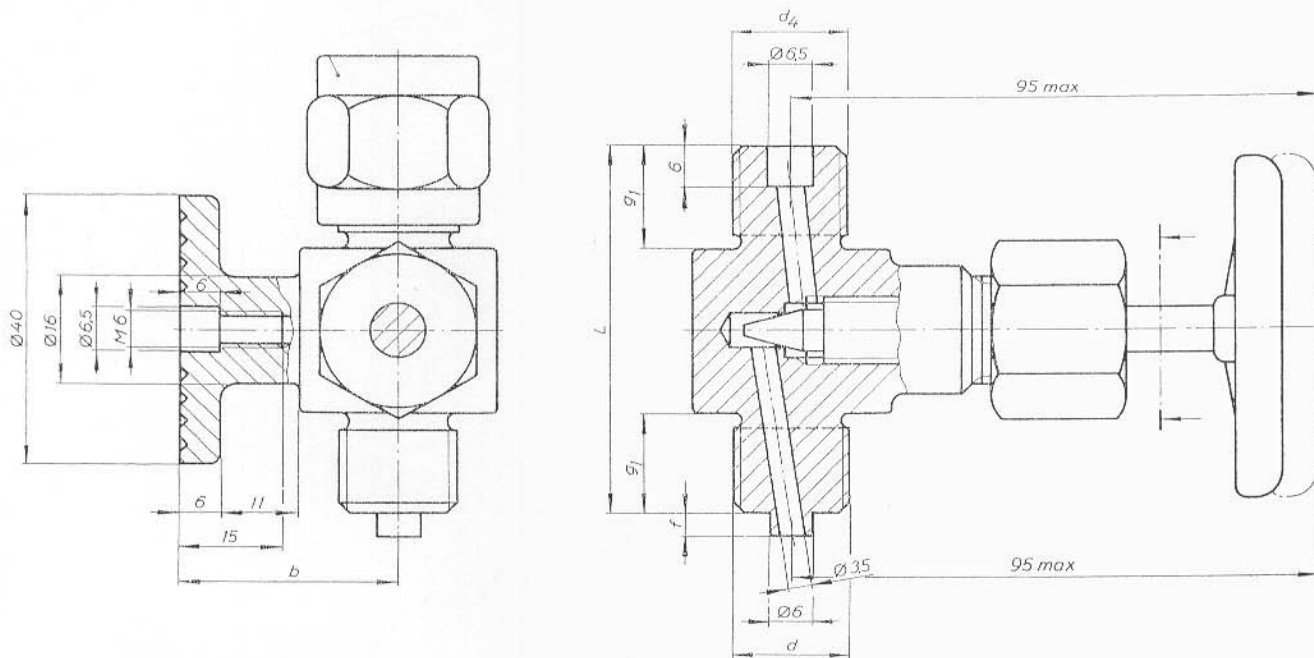


PRESSURE GAUGES NEEDLE VALVES WITH CHECKING FLANGE

Stainless steel AISI 430F		Stainless steel AISI 316L
DN	RSK.no	RSK.no
10	462 32 11	462 32 35
15	462 32 29	462 32 36



DN	Thread		g1	f	L
	d	d4			
10	R3/8-B	R3/8-B Left	15	3	54
15	R1/2-B	R1/2-B Left	20	5	64

Working pressure 400 Bar 20 C
 Stainless steel 160 Bar 125 C
 125 Bar 200 C
 20 Bar 300 C

The valve can be supplied with locked boxnut.
 Packing: Graphite.
 The valve are supplied with handwheel of steelplate.

Rubens
VERKSTAD AB

BOX 103, S-280 60 BROBY

PHONE +46 44 401 78 • FAX +46 44 408 51